

## LEADING The FUTURE of Visual Experiences

Embark on a groundbreaking visual revolution as we proudly present Signage E-paper, offering comprehensive technical support to elevate your information delivery.



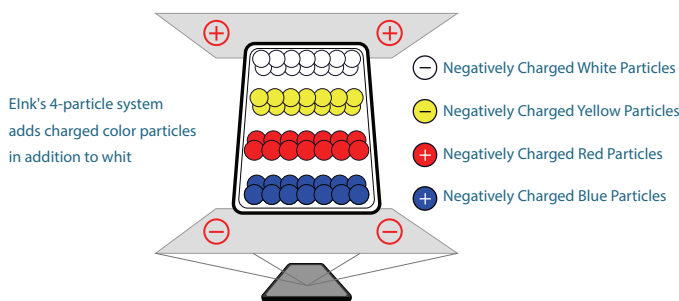
- ESG-friendly**
- Lightweight**
- Paper-Like**
- Wide View Angle**
- No Blue Light**
- Low Carbon Emissions**
- Bi-Stability**
- Power Bank Supply Support**

### Spectra™ 6

#### Evolution of Color

Revolutionary full-color E-paper technology presenting six vibrant base colors.

- High saturation
- Sharp brilliance
- Black, white, red, yellow, blue, and green, colors brought to life.



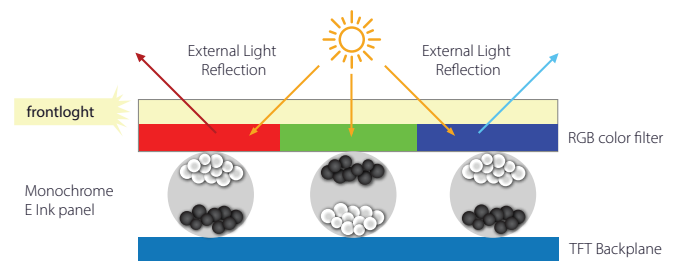
### Kaleido

#### A New Outdoor Experience

Designed for the outdoors, with extreme temperature tolerance.

- Temperature range: -15°C to 50°C
- Durable and high-quality display for outdoor applications.

#### Print Color ePaper Technology



Best color performance with enabled front light  
Retains the eye-friendly characteristics of epaper

## Experience the Future of Communication

Join us in revolutionizing the way you communicate with Signage E-paper. Elevate your visual experiences, captivate your audience, and lead the way in the future of information delivery. Learn More about our Signage E-paper solution and bring innovation to your communication strategy.

## APPLICATION CASES

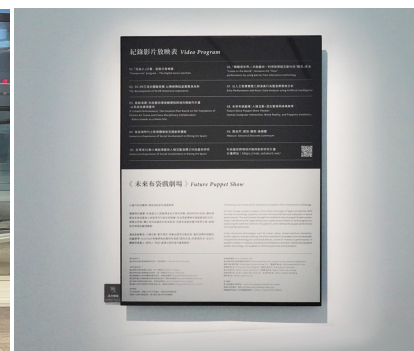
# The Lightweight and Energy-Efficient Marvel of E-Paper



Smart Bus Stop Display



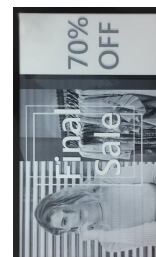
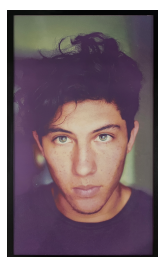
E-paper features a lightweight and energy-efficient design. It can sustain displays even without a power connection.



Elegant monochrome e-paper is also highly suitable for displays in museums.



Exceptional display quality makes it the latest choice for the retail industry and showcasing public information.



e-Paper Technology	Spectra 6			Gallery Plus		Kaleido4096		Spectra 3100	Mono
Type	EDA-32S6	EDA-25S6	EDA-13S6	EDA-25C	EDA-13C	EDA-25K	EDA-13K	EDA-25E	EDA-25M
Color	Full-color			Full-color		4096		Full-color	Grayscale
Size	31.5"	25.3"	13.3"	25.3"	13.3"	25.3"	13.3"	25.3"	25.3"
Dimension(cm)	72x 42 x 2	59 x 35 x 3	30 x 23 x 3	59 x 35 x 3	30 x 23 x 3	59 x 35 x 3	30 x 23 x 3	59 x 35 x 3	59 x 35 x 3
Resolution	2560x1440	3200x1800	1600x1200	3200x1800	1600x1200	3200x1800	1600x1200	3200x1800	3200x1800
Operating Temperature	0°C ~ 50°C			15°C~35°C		-15°C~50°C		0°C~40°C	-15°C~65°C
Reaction time	15s			35s		2s		15s	2s
Application	Indoor			Indoor		Indoor/Outdoor		Indoor	Indoor Outdoor



RapidSignage Inc.

✉ info@rapidsignage.com

☎ +886-2-2697-5636

🌐 www.rapidsignage.com

🏠 No. 11, 4th Floor, No. 5, Yike East Road, Yilan City, Yilan County, Hsinchu Science Park Taiwan (R.O.C.)

